

NOTES DIMENSIONS TO BE CHECK ONSITE

SYSTEM SIZE: 5591.7 kWp      MODULE TYPE: 270 W



REV	DESCRIPTION	DRN	CKD	DATE
-	-	-	-	-

**Integrated Solar Solutions**

Kingspan Insulated Panels,  
Kingspan Ltd  
Greenfield Business Park No.2,  
Holywell, Flintshire,  
CH8 7GU, UK  
T: 01552 717232  
W: www.kingspanpanels.com



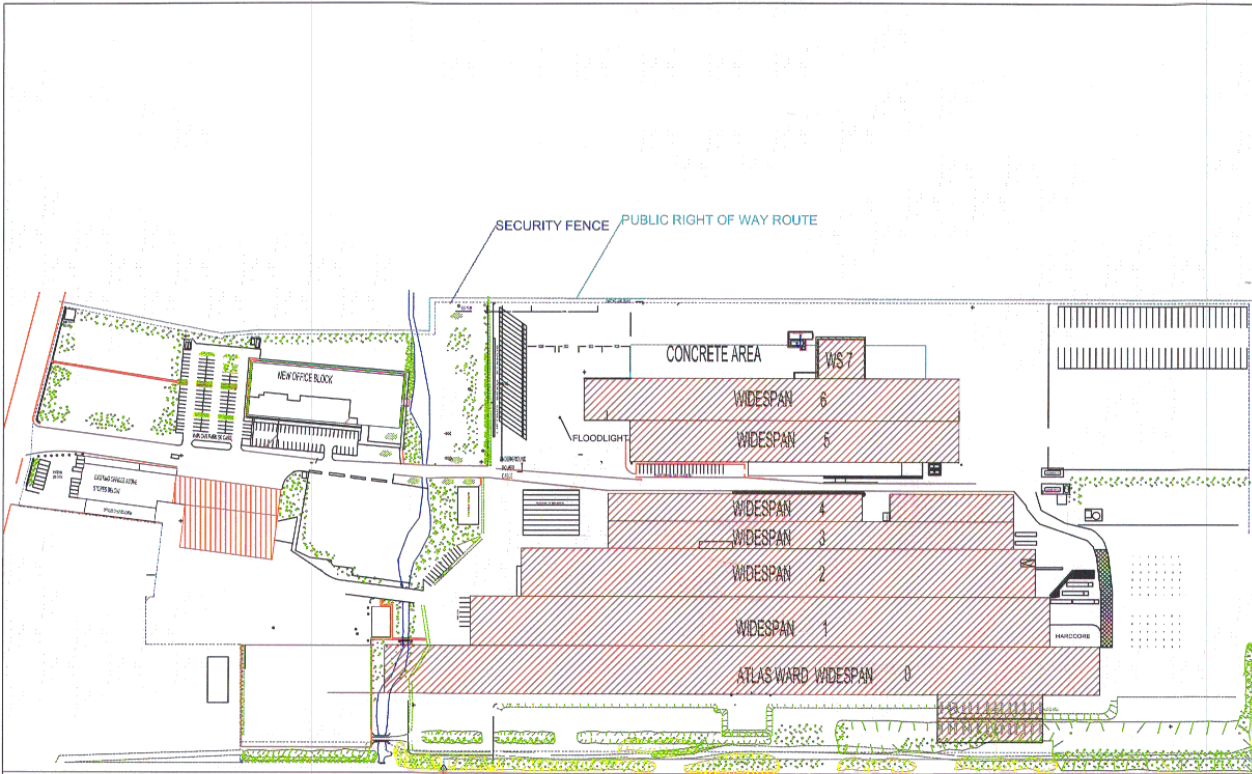
STATUS FOR INFORMATION

PROJECT KINGSKAN SHERBURN UK

TITLE Kingspan Site Drawing

DRN	AH	CKD	RC
DATE	03/12/13	REV	0
SCALE	1:2500	DWG NO.	KES 204

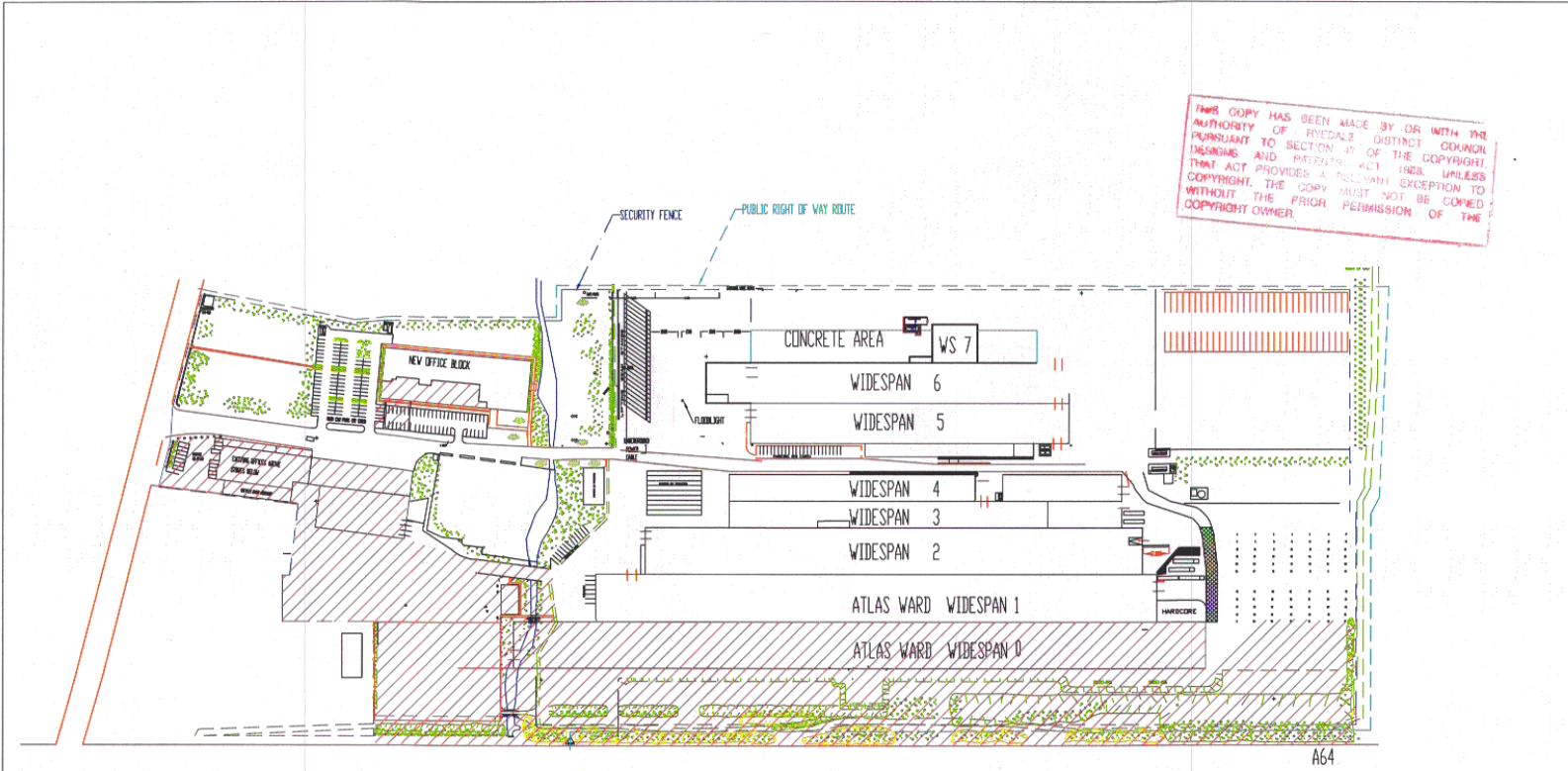
This drawing is property of Kingspan Insulated Panels Ltd. It is to be used for the project only and is not to be copied, reproduced or used for any other purpose without the prior written permission of Kingspan Insulated Panels Ltd.



TOTAL SITE AREA = 200,179 Sq.METRES = 49.54 ACRES.

**THIS COPY HAS BEEN MADE BY OR WITH THE AUTHORITY OF RYEDALE DISTRICT COUNCIL PURSUANT TO SECTION 47 OF THE COPYRIGHT, DESIGNS AND PATENTS ACT 1988. UNLESS THAT ACT PROVIDES A RELEVANT EXCEPTION TO COPYRIGHT, THE COPY MUST NOT BE COPIED WITHOUT THE PRIOR PERMISSION OF THE COPYRIGHT OWNER.**

THIS COPY HAS BEEN MADE BY OR WITH THE AUTHORITY OF RYEDALE DISTRICT COUNCIL PURSUANT TO SECTION 47 OF THE COPYRIGHT, DESIGNS AND PATENTS ACT 1988. UNLESS THAT ACT PROVIDES A RELEVANT EXCEPTION TO COPYRIGHT, THE COPY MUST NOT BE COPIED WITHOUT THE PRIOR PERMISSION OF THE COPYRIGHT OWNER.



TOTAL SITE AREA = 200,179 SqMETRES = 49.54 ACRES.

 LAND & BUILDINGS LEASED BY ATLAS WARD HOLDINGS

<b>WARD</b>	Building Components Ltd.
COMPONENTS DIVISION	
WARD SITE DRAWING	
DATE: 12/2/20	SCALE: 1:100
SITE002.DWG	